

# Global Smart Leader!

*The Best Business Partner For You*



Head Office : 60, Hwajeonsandan 6-ro, Gangseo-gu, 46741, Busan, Korea  
2nd Factory : 51, Dasan-ro 175beon-gil, Saha-gu, Busan, 49487, Busan, Korea  
Seoul Office : #B-1507, D-Polis Bldg., 606, Seobusaet-gil, Geumcheon-gu, 08504, Seoul, Korea  
TEL: +82-2-861-8710 FAX: +82-2-861-8129 E-mail: [fineglobal@fineglobal.kr](mailto:fineglobal@fineglobal.kr) Website: [www.fineglobal.kr](http://www.fineglobal.kr)



Global Smart Leader!

*The Best Business Partner For You*

# FINE Global



All Kinds of Military & Police Supply Solution

Global Smart Leader!

*The Best Business Partner For You*





**FINE Global**



# CONTENTS

---

<b>FINE BOAT SERIES</b>	<b>04</b>
<b>UNMANNED MILITARY SOLUTION</b>	<b>08</b>
<b>WATER TREATMENT SOLUTION</b>	<b>10</b>
<b>SPECIAL PURPOSE VEHICLE</b>	<b>12</b>
<b>CBRNE / FIRE FIGHTING EQUIPMENT</b>	<b>14</b>
<b>BALLISTIC PROTECTION</b>	<b>16</b>
<b>ANTI RIOT EQUIPMENT</b>	<b>18</b>
<b>FIELD EQUIPMENT</b>	<b>20</b>
<b>FOOTWEAR</b>	<b>22</b>

---



# FINE BOAT SERIES

Aluminum Military Boat [5m ~ 23m]

FRP Military Boat [5m ~ 23m]

Military Inflatable Boat [3.8m / 4.7m / 5.8m]



**Material** – Aluminum / FRP / Rubber  
**Size** – 5m ~ 23m  
**Main Customer** – Navy / Coastguard / Marine / Army / Maritime Police etc.  
**Main Purpose** – Mission / Surveillance / Patrol / Life Saving & Rescue

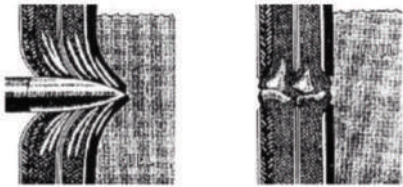
# FINE BOAT SPECIAL FEATURES

## Ballistic Protection [Cabin / Window]

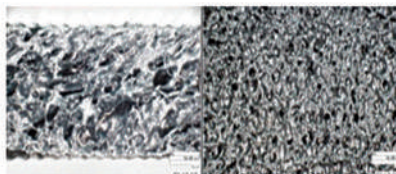


Following Standard NIJ Level as per client's request

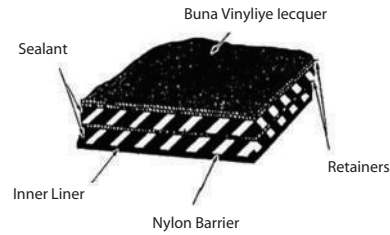
## Self-Sealing Fuel Tank



Bullet Sealing Action



Rubber Layer Section



Self-Sealing Fuel Cell



Volume Change

**Purpose** - To minimize the leakage of the fuel inside against Gun Attack

**Material** - Complex Laminated Fibers and Rubber Layer

**Effectiveness** - Improving survivability & minimizing secondary fire

## Self-Righting System



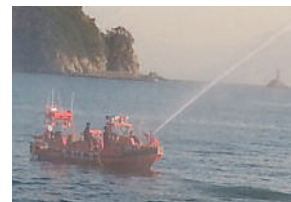
Open Type



Cabin Type



## Non-Lethal Water Cannon



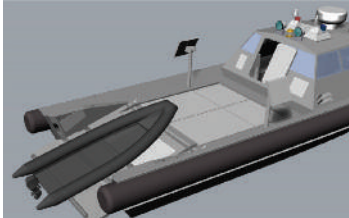
### :: Performance

Max. Distance - Approx. 40m (Stop the boat while shooting water)

Shooting seawater on the sea directly

CS Liquid can be mixed

**Inflatable Boat Load/Unload Function**



↓ Loading on the Deck



**Single Point Lifting System**



Easy & Quick Operation  
Connect with Davit

**Self-Produced Buoyancy Tube**



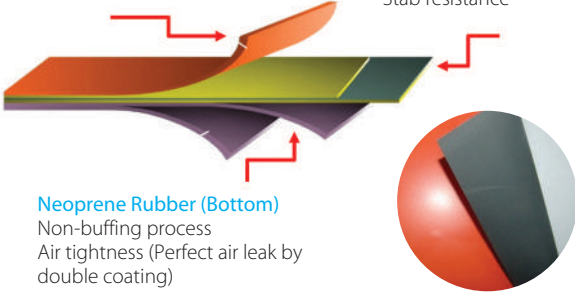
KH 310 CSM



Foam Fender

**CSM Rubber (Outside)**  
Non-buffing process  
Weather resistance  
Chemical resistance  
Avrasino resistance

**Textiles (Middle)**  
High Tensile resistance  
High Tear resistance  
Stab resistance



**Neoprene Rubber (Bottom)**  
Non-buffing process  
Air tightness (Perfect air leak by double coating)

Buoyancy Tube

**Naval RCWS Application**



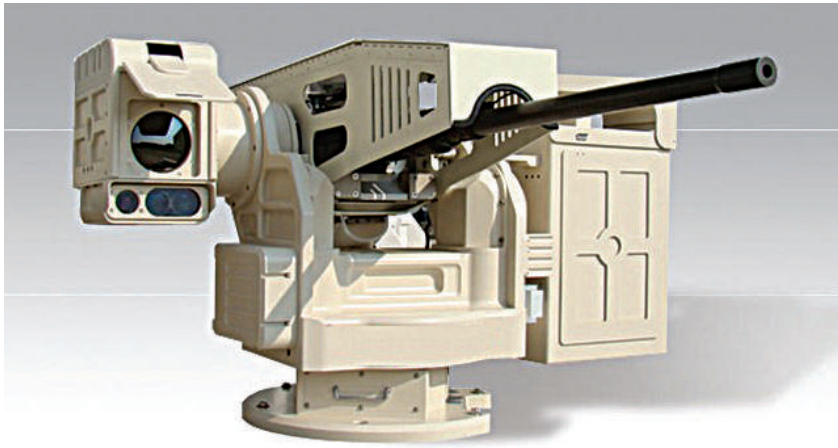
**:: Standard Caliber**  
5.56mm / 7.62mm / 12.7mm / 40mm  
\* Other Caliber is applicable as per request.  
Universal mounting system with Pin / Block





# UNMANNED MILITARY SOLUTION

Intelligent Surveillance / Detection Robot  
Combat Robot [Lethal]  
Mobile RCWS



## SPECIAL FEATURES

### Standard Caliber

5.56mm / 7.62mm / 12.7mm / 40mm

\* Other Caliber is applicable as per request.

### Fixed / Mobile Type

Universal mounting system with Pin / Block

## Intelligent Surveillance / Detection Robot



Perimeter



Mid-Range



Long Range



Long Range Mobile



Multi



IR

## Combat Robot [Lethal]



K2 / M16  
5.56mm



K3 / M60  
7.62mm



Cal 50.  
12.7mm



K6 / Cal 50  
12.7mm



K4 / K6



As per request

## Mobile RCWS



### Type

- Lethal / 5.56mm, 7.62mm, 12.7mm, 40mm
- Surveillance

### Features

- Laser Range Finder (Detection : 20km)
- Laser Illuminator : 808nm
- Collimation Angle Auto Link to Zoom Lens
- GPS / Compass
- Fog Enhancement DSP
- Full Motion Stabilization

### Detection Range

- Day : Vehicle 20km / Human 15km
- Thermal : Vehicle 19.2km / Human 15.5km
- LD Illuminator : 1.5km Recognition (No Moon)



# WATER TREATMENT SOLUTION

Wastewater Treatment Solution  
Sewage Water Treatment Solution  
R/O [Reverse Osmosis] Solution

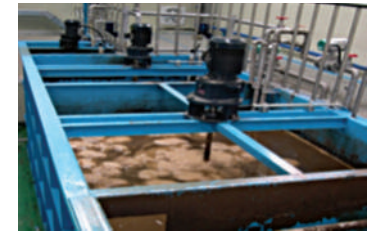




## Wastewater Treatment Solution

### Business Field

- Industrial Wastewater Treatment
- Re-use of Wastewater



## Sewage Water Treatment Solution

### Business Field

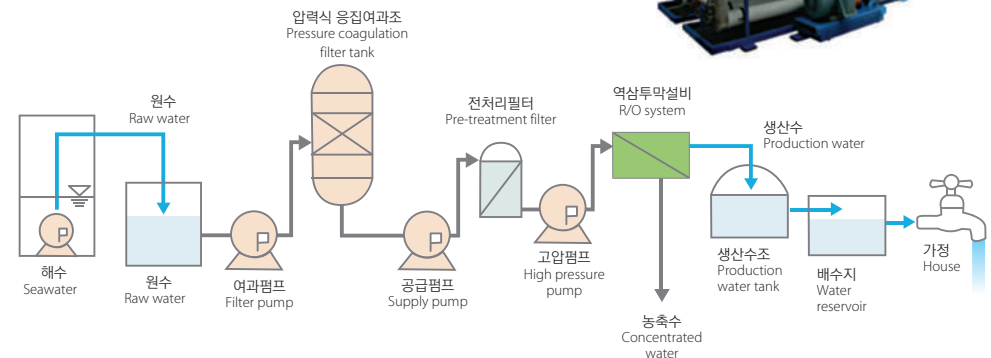
- General Sewage Water Treatment
- Re-use of Sewage Water



## R/O [Reverse Osmosis] Solution

### Business Field

- Seawater Desalination System
- Chemistry / Semiconductor Process
- Pharmaceutical / Food Process





# SPECIAL PURPOSE VEHICLE

Mobile Medical Shelter  
APC [Armored Personnel Carrier]  
Various Special Vehicles

EXTEND ONE  
HOLE TO LIFT



APC [Armored Personnel Carrier]



- Configuration – 4X4
- Overall Length – Approx. 6.3m
- Crew – 12 persons
- Speed – Max. 100km/h (Road)
- Configuration – 6X6 or 8X8
- Main – 30mm
- Coax – 7.62mm
- Speed – 100~105km/h (Road)
- Configuration – 6X6 or 8X8
- Ready to Fire – 8 missiles
- Surveillance Range – Approx. 20km
- Speed – 100~105km/h (Road)

Mobile Medical Shelter



Military Purpose Vehicle



Fire Fighting Vehicle



Command Vehicle



# CBRNE / FIRE FIGHTING EQUIPMENT

Gas Mask / CBRNE Clothes  
Heat Proximity Clothes  
Self-Contained Breathing Apparatus  
Fire Fighting Equipment



**Gas Mask / CBRNE Clothes**



Binocular



Monocular



Vision Correction System



Voice Amplifier



Carrying Bag



Approved NFPA 1991 : 2005 for Chemical Protective Suit

**Heat Proximity Clothes**



Over 90% of High Heat due to strong flame

Newly adopted Aluminum Coating Method

- Lower weight and Softer fabric for more efficient operation

Fabric composition

- Aluminized heat resistant fabric, middle layer, felt, and inner

**Self-Contained Breathing Apparatus**



Type of filling gas : Air

Hours of use : Approx. 50 mins

Gross weight : 8kg or less

(excluding saver and air weight)

**Fire Fighting Equipment**



Light Weight Fire Fighting Equipment for Easy Operation



A soldier in full tactical gear, including a helmet, goggles, and a bulletproof vest, is holding an assault rifle. The soldier is wearing a dark, textured bulletproof vest and a helmet with a night vision device. The background is a dark, textured wall.

# BALLISTIC PROTECTION

Bullet Proof Helmet [NIJ Level IIIA]  
Bullet Proof Jacket [NIJ Level II ~ IIIA]  
Bullet Proof Plate [NIJ Level III ~ IV]



**SPECIAL FEATURES**

Material : Aramid, Kevlar, PE or as per request  
 Picatinny Rail / Night Vision Bracket for Bullet Proof Helmet  
 MOLLE / Quick Release type is applicable as per request  
 Following Standard NIJ Level

Level	CALIBER	NIJ STANDARD 0101.06 VELOCITIES
Level IIA	9mm 124gr. FMJ RN 40 S&W	1225 ft/s
	9mm 124gr. FMJ RN .357 Magnum 158 gr. JSP	1155 ft/s
Level II	9mm 124gr. FMJ RN .357 Sig 125 gr. FN	1305 ft/s
	.357 Magnum 158 gr. JSP .44 Magnum 240 gr. JHP	1430 ft/s
Level IIIA	.357 Sig 125 gr. FN .44 Magnum 240 gr. JHP	1470 ft/s
	.357 Sig 125 gr. FN .44 Magnum 240 gr. JHP	1430 ft/s
Level III	7.62mm NATO 148 gr. (.308 Caliber) FMJ	2780 ft/s
	7.62mm NATO 148 gr. (.308 Caliber) FMJ	2780 ft/s
Level IV	30.06 166 gr. (.30 Caliber) M2AP Armor Piercing	2880 ft/s
	30.06 166 gr. (.30 Caliber) M2AP Armor Piercing	2880 ft/s

**BULLET PROOF HELMET [NIJ Level IIIA]**



PASGT



ACH/MICH



MICH HIGHCUT with Picatinny rails & NV bracket



CROATIAN/GERMAN STYLE

**BULLET PROOF VEST [NIJ Level II~III]**



Basic Type



VIP Type



MOLLE Type



Combat Type



Quick Release Type

**BULLET PROOF PLATE [NIJ Level III~IV]**



A-Type



B-Type



Groin Protector



# ANTI RIOT EQUIPMENT

Anti Riot Protection Suit / Helmet  
Anti Riot Baton / Shield  
Electric Baton / Stun Gun  
Duty Belt / Handcuffs



**Anti Riot Protection Suit / Helmet**



Anti Riot Protection Suit

Anti Riot Helmet

**Anti Riot Baton / Shield**



Anti Riot Baton



Anti Riot Shield

**Electric Baton / Stun Gun**



Electric Baton



Stun Gun

**Duty Belt / Handcuffs**



Duty Belt



Standard steel single ratchet Handcuffs



Standard steel 3Line ratchet Handcuffs



Hinged Handcuffs



Plastic Handcuffs



# FIELD EQUIPMENT

Military Tent  
Field Bed  
Alice Backpack  
Bayonet / Shovel etc.



**Military Tent**



**Field Bed**



**Alice Backpack**



**Bayonet / Shovel etc.**





# FOOTWEAR

Military / Police Boots  
Officer / Sports Shoes



**Military / Police Boots**



**SPECIAL FEATURES**

- Anti Abrasion Function
- Injection / Cement Type
- Gore-tex Application
- Anti Frostbite Function

**Officer / Sports Shoes**

